

Self-Other Relations in Interaction
Symposium Program

May 17th - 18th, 2018

Thursday, May 17th 2018

- 3:00 Introduction**
Steven Clayman, UCLA
- 3:15 Growing up with CA:
Scenes from a Career**
John Heritage, UCLA

Reception to follow

Friday, May 18th 2018

- 8:15 Coffee & Light Breakfast**
- 8:45 Opening Remarks**
- 9:00 Self-Correction**
Paul Drew, University of York
- 10:00 Commonsense, Garfinkel, Heritage,
and Autistic Intelligence**
Douglas Maynard, University of Wisconsin-Madison
- 11:00 Break**
- 11:30 Interactional Practices in Literary Translations: The
Case of *Kunpa* and its Cousins**
Marja-Leena Sorjonen, University of Helsinki
- 12:30 Lunch**
- 1:30 Responding to Activities in Play: When Polar
Questions do not Require Polar Responses**
Jeffrey Robinson, Portland State University
- 2:30 Becoming a “Good Parent”: Epistemics in Daycare
Teacher-Parent Interaction**
Kaoru Hayano, Japan Women’s University
- 3:30 Break**
- 4:00 Institutional Bilingualism**
Chase Raymond, University of Colorado, Boulder
- 5:00 Drinks Reception, Dinner &
Evening Program**

Sponsored by:

The UCLA Center for Language, Interaction & Culture, and
The UCLA Department of Sociology

Thank you to:

Allan Hill, Ryan Miller,
Amanda McArthur, Steven Clayman,
Our Student Volunteers

Event Coordinator

Clara Bergen

CLIC Director

Tanya Stivers

Mission Statement

The UCLA Center for Language, Interaction and Culture (CLIC) is an interdisciplinary research center dedicated to the study of spontaneous social interaction in diverse cultures and contexts. CLIC faculty are dedicated to training students and scholars in a variety of methodologies for understanding the multiple uses of language in everyday life.

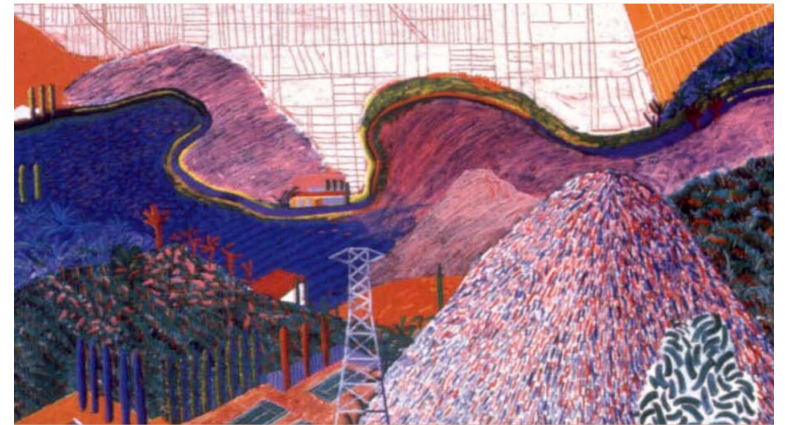
Executive Board

Erica Cartmill, Steven Clayman, Alessandro Duranti,
John Heritage, Norma Mendoza-Denton, Elinor Ochs
& Tanya Stivers

<http://clic.ss.ucla.edu/>

Symposium in Honor of John Heritage,
Distinguished Professor of Sociology

Self-Other Relations in Interaction



UCLA Covel Commons
May 17th-18th, 2018

Paul Drew
Kaoru Hayano
Doug Maynard
Chase Raymond
Jeffrey Robinson
Marja-Leena Sorjonen

Sponsored by the UCLA Center for Language, Interaction
and Culture, and the UCLA Department of Sociology